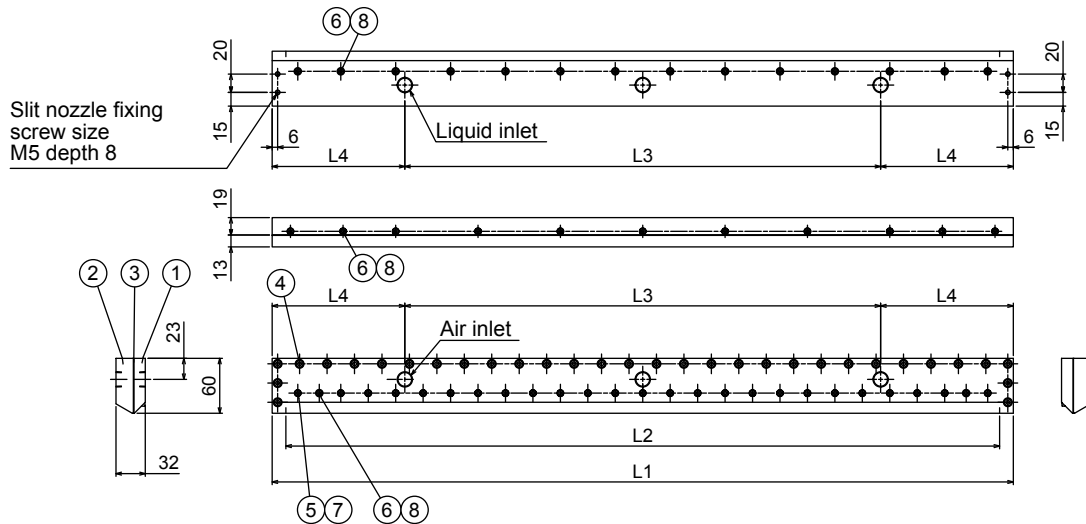


- Pneumatic slit-laminar nozzle with high spray impact.
- Uniform spray distribution throughout the entire spray pattern area allows for a complete cleaning with no spot unwashed.
- PSN series can be used at a short spray distance.

APPLICATIONS

- Cleaning: Glass substrate, liquid crystal
- Cooling: Steel plates, moldings
- Moisture control: Paper, cardboard

DRAWING



COMPONENTS AND MATERIALS

| No. | Components | Standard materials |
|-----|---------------------------------|--------------------|
| 1 | Nozzle body (Air inlet side) | S304 |
| 2 | Nozzle body (Liquid inlet side) | S304 |
| 3 | Packing | PE |
| 4 | Bolt (M5x12) | S304 |
| 5 | Bolt (M4x8) | S304 |
| 6 | Bolt (M4x10) | S304 |
| 7 | O-ring (P-4) | FKM |
| 8 | O-ring | FKM |

DIMENSIONS

| Nozzle code | | Number of inlets - Inlet thread size | | L1*1 (mm) | L2 (mm) | L3 (mm) | L4 (mm) | Mass (kg) |
|---------------------|-------------------|--------------------------------------|-----------|-----------|---------|---------|---------|-----------|
| Slit length L2 (mm) | Slit opening (mm) | Air | Liquid | | | | | |
| 460 | 0.05 | 2 - Rc3/8 | 2 - Rc3/8 | 490 | 460 | 230 | 130 | 5.6 |
| 600 | | 3 - Rc3/8 | 3 - Rc3/8 | 630 | 600 | 400 | 115 | 7.2 |
| 700 | 0.15 | 3 - Rc3/8 | 3 - Rc3/8 | 730 | 700 | 460 | 135 | 8.4 |
| 780 | | 3 - Rc3/8 | 3 - Rc3/8 | 810 | 780 | 520 | 145 | 9.3 |
| 1200 | | 5 - Rc3/8 | 5 - Rc3/8 | 1,230 | 1,200 | 960 | 135 | 14.0 |

*1) Total length L1 available from 250 to 3,200 mm.

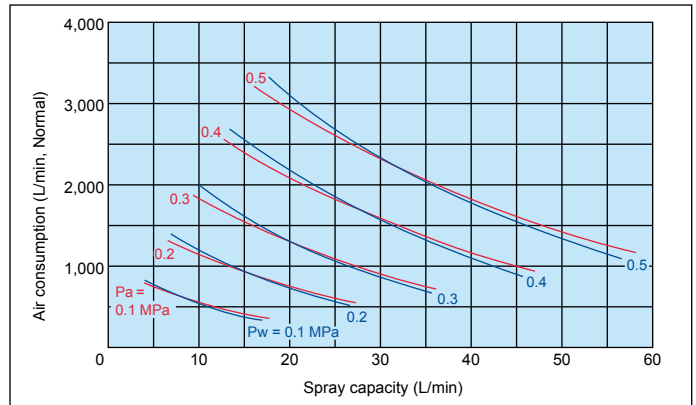
FLOW-RATE DIAGRAMS

■ How to read the chart

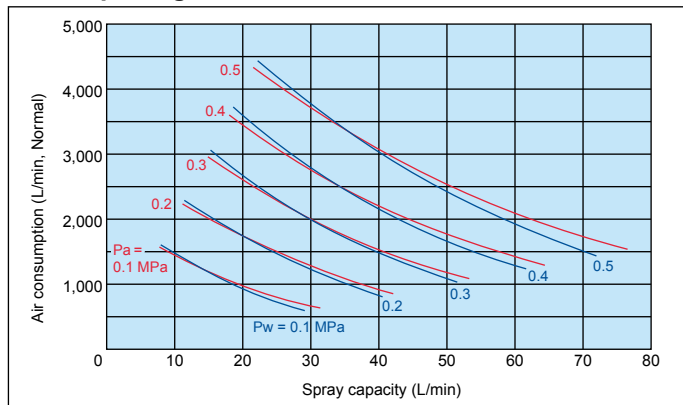
1. The air consumption and spray capacity shown are for one nozzle per 1,000 mm of slit length.
2. **Red lines** (—) represent compressed air pressures Pa in MPa.
Blue lines (—) represent liquid pressures Pw in MPa.

Air consumption and spray capacity are proportionate to slit length. To calculate the air consumption and spray capacity for slit length longer/shorter than 1,000 mm, multiply in proportion to this length. (Example: when the slit length is 700 mm, multiply the amount for 1,000 mm x 0.7)

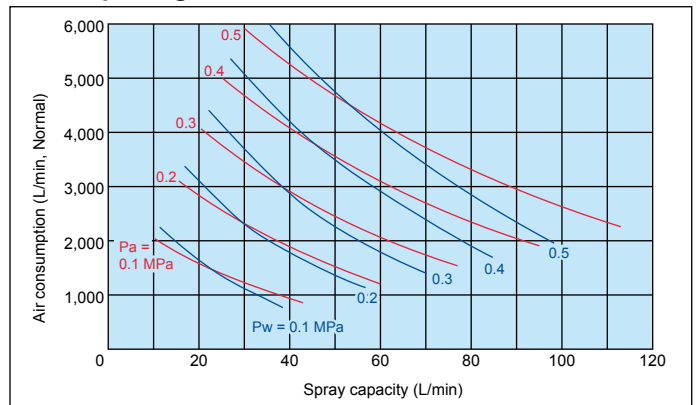
■ Slit opening: 0.05 mm



■ Slit opening: 0.1 mm



■ Slit opening: 0.15 mm



PSN

HOW TO ORDER

Please inquire or order for a specific nozzle using this coding system.

<Example> 2 x 3 - 3/8F PSN 700 x 0.05 S304

| | | | | | | | | | |
|---|---|------------------|---|----------------------------------|-----|-------------|---|--------------|-------------------------|
| 2 | x | 3 | - | 3/8F | PSN | 700 | x | 0.05 | S304 |
| | | Number of inlets | | Inlet thread size (3/8F = Rc3/8) | | Slit length | | Slit opening | Material of nozzle body |
| | | ■2 | | | | ■460 | | ■0.05 | |
| | | ■3 | | | | ■600 | | ■0.1 | |
| | | ■5 | | | | ■700 | | ■0.15 | |
| | | | | | | ■780 | | | |
| | | | | | | ■1200 | | | |

Please feel free to send us an inquiry for a different slit length.